



Shanghai Leiqiong Lighting Technology Co., LTD

Add.: 5-D,5th Floor, NO.Jiangyue Rd., Minhang Dis., Shanghai, China

Tel: 021-52716052 Fax: 021-5271 6053

Web:www.better-led.com Web:www.ledskylamp.com

Contacting: Ms. Susan Hu Mail:Sales9@better-led.com

LED FLOOD LIGHT 08 SERIES

PARAMETER:

λ ***LQ-FL-50W-08***

λ ***Light source: LED***

λ ***LED Brand: LG / Philips***

λ ***Driver: Meanwell***

λ ***Power: 50W***

λ ***Work voltage: AC(85V-265V)/(50-60HZ)***

λ ***Power factor(PF): >0.9***

λ ***Lumen output: >18000 lm***

λ ***Light efficiency: >90 lm/w***

λ ***No UV or IR light radiation***

λ ***Fixture efficiency: >90%***

λ ***View angle: 120°***

λ ***Color instruction: >70***

λ ***Color temperature(CCT): 2700-7000K***

λ ***Life time: >50,000 hrs***

λ ***Luminance decrease: keep lighting 1000hours decrease 1%***

λ ***IP grade: IP65***





Shanghai Leiqiong Lighting Technology Co., LTD

Add.: 5-D,5th Floor, NO.Jiangyue Rd., Minhang Dis., Shanghai, China

Tel: 021-52716052 Fax: 021-5271 6053

Web:www.better-led.com Web:www.ledskylamp.com

Contacting: Ms. Susan Hu Mail:Sales9@better-led.com

- λ ***CE certification***
- λ ***The color of the lamp shell: Black***
- λ ***Net weight: 5kg***
- λ ***Gross weight:5.5kg***
- λ ***Dimension of the box: 53*37*26cm***
- λ ***Quantity (PCS): 8pcs in a carton***

TYPICAL APPLICATIONS:

- λ ***Workshop***
- λ ***Storages***
- λ ***Factories***
- λ ***Rtg crane***
- λ ***Building***



Shanghai Leiqiong Lighting Technology Co., LTD

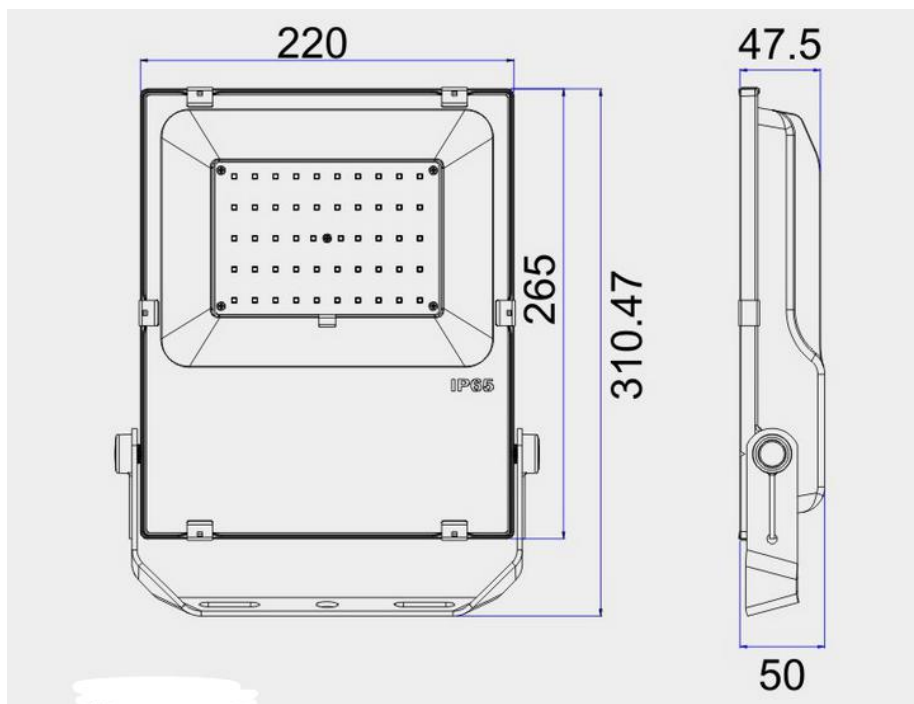
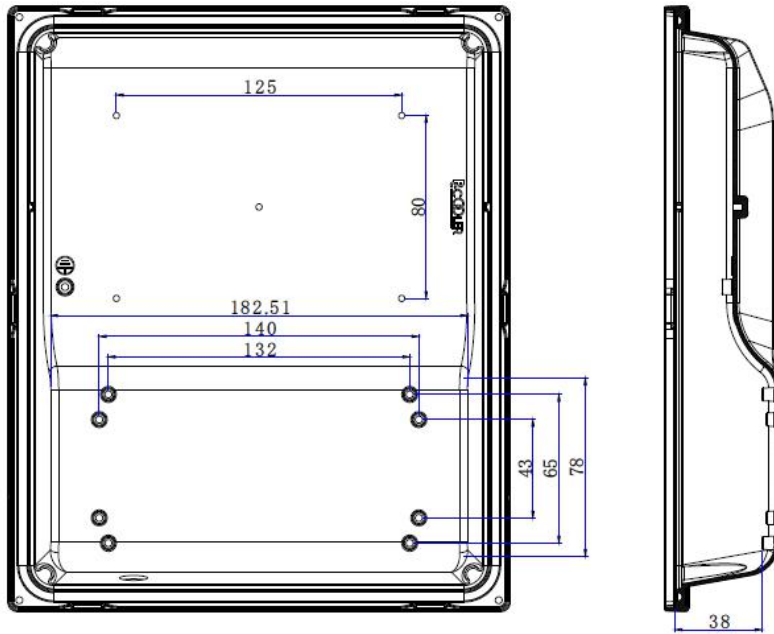
Add.: 5-D,5th Floor, NO.Jiangyue Rd., Minhang Dis., Shanghai, China

Tel: 021-52716052 Fax: 021-5271 6053

Web:www.better-led.com Web:www.ledskylamp.com

Contacting: Ms. Susan Hu Mail:Sales9@better-led.com

PRODUCT DIMENSIONS:





Shanghai Leiqiong Lighting Technology Co., LTD

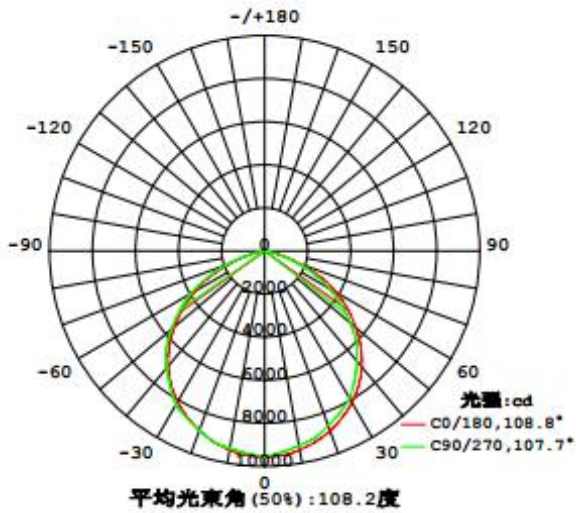
Add.: 5-D,5th Floor, NO.Jiangyue Rd., Minhang Dis., Shanghai, China

Tel: 021-52716052 Fax: 021-5271 6053

Web:www.better-led.com Web:www.ledskylamp.com

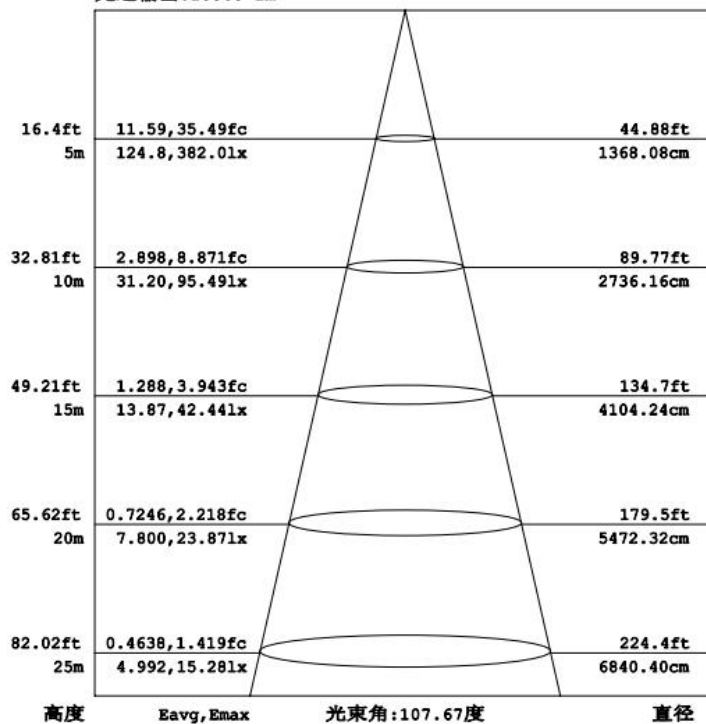
Contacting: Ms. Susan Hu Mail:Sales9@better-led.com

PHOTOMETRIC RESULTS:



ILLUMINANCE:

光通输出: 18568 lm





Shanghai Leiqiong Lighting Technology Co., LTD

Add.: 5-D,5th Floor, NO.Jiangyue Rd., Minhang Dis., Shanghai, China

Tel: 021-52716052 Fax: 021-5271 6053

Web:www.better-led.com Web:www.ledskylamp.com

Contacting: Ms. Susan Hu Mail:Sales9@better-led.com

Quality Control



LED Flood light safety performance and main electrical parameter test. Including electric leakage detection, high-voltage insulation test, Power test, GND resistance test, Insulation resistance test and Power factor test.

Quality Control



Lighting Performance test. Including Color temperature test, CRI test, lumen test, light efficiency test, Power factor test, and some electrical parameter test.



Shanghai Leiqiong Lighting Technology Co., LTD

Add.: 5-D,5th Floor, NO.Jiangyue Rd., Minhang Dis., Shanghai, China

Tel: 021-52716052 Fax: 021-5271 6053

Web:www.better-led.com Web:www.ledskylamp.com

Contacting: Ms. Susan Hu Mail:Sales9@better-led.com



Aging Test. After safe test and lighting test, will be the aging test, aging test will last for 24 hours.

Quality Control



Laser silk-screen machine. This machine can print the logo, LED lamp parameter, model NO. etc. It is more professional.



Shanghai Leiqiong Lighting Technology Co., LTD

Add.: 5-D,5th Floor, NO.Jiangyue Rd., Minhang Dis., Shanghai, China

Tel: 021-52716052 Fax: 021-5271 6053

Web:www.better-led.com Web:www.ledskylamp.com

Contacting: Ms. Susan Hu Mail:Sales9@better-led.com

Packing of 50W LED Flood light



Packing Details: 8pcs / Carton, Carton size: 53*37*26 cm

Applications of LED Flood light





Shanghai Leiqiong Lighting Technology Co., LTD

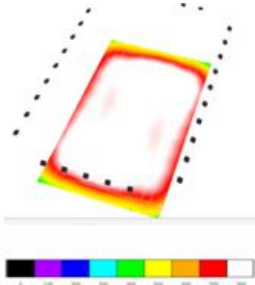
Add.: 5-D,5th Floor, NO.Jiangyue Rd., Minhang Dis., Shanghai, China

Tel: 021-52716052 Fax: 021-5271 6053

Web:www.better-led.com Web:www.ledskylamp.com

Contacting: Ms. Susan Hu Mail:Sales9@better-led.com

Lighting Solution simulation service (in Dialux software)



Lighting simulation



Choose Lamp



Ensure propriety